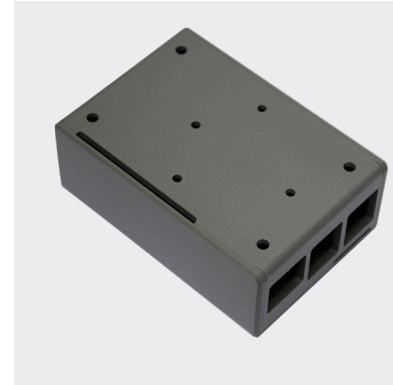
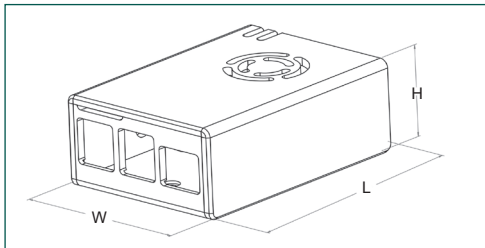


# 2U Raspberry Pi 4B enclosure with fan vent

## Product overview

Clip together 2-U-Shell enclosure for the Raspberry Pi 4B.

- Pi 4B PCB fits into grooves (no screws)
- Venting on top of case
- GPIO ribbon cable slot on the underside
- CSI slot for camera cable
- Rear slots for SD card and LEDs
- Supplied with push fit rubber feet
- Recommended for use with a 30mm fan
- Fan fixing holes can be easily knocked out using screws
- In-house testing of the PCU to operating temperature of 44°C, when used in conjunction with a fan
- Compatible with Pi HAT POE
- Transform your Raspberry Pi enclosure into a DIN Rail mountable solution by ordering the DIN Rail Mount Bracket Kit option



PART NO.	COLOUR	ENCLOSURE/KIT	MATERIAL	MATERIAL TEMPERATURE	UL RATING	MATERIAL THICKNESS	DIMENSIONS
CBRPI4B-2U-BK	Black	Enclosure only	High impact polystyrene	Rated for use up to 96°C	HB	3mm	L 89.3mm x W 62.4mm x H 34mm
CBRPI4B-2U-DG	Dark Grey	Enclosure only	High impact polystyrene	Rated for use up to 87°C	HB	3mm	L 89.3mm x W 62.4mm x H 34mm
CBRPI4B-2U-LG	Light Grey	Enclosure only	High impact polystyrene	Rated for use up to 87°C	HB	3mm	L 89.3mm x W 62.4mm x H 34mm
CBRPI4B-2U-GW	Gloss White	Enclosure only	Acrylic capped ABS	Rated for use up to 95°C	HB	3mm	L 89.3mm x W 62.4mm x H 34mm
CBRPI4B-2U-BK+MB	Black	Enclosure and DIN Rail mount bracket kit	High impact polystyrene	Rated for use up to 96°C	HB	3mm	L 89.3mm x W 62.4mm x H 34mm
CBRPI4B-2U-DG+MB	Dark Grey	Enclosure and DIN Rail mount bracket kit	High impact polystyrene	Rated for use up to 87°C	HB	3mm	L 89.3mm x W 62.4mm x H 34mm
CBRPI4B-2U-LG+MB	Light Grey	Enclosure and DIN Rail mount bracket kit	High impact polystyrene	Rated for use up to 87°C	HB	3mm	L 89.3mm x W 62.4mm x H 34mm
CBRPI4B-2U-GW+MB	Gloss White	Enclosure and DIN Rail mount bracket kit	Acrylic capped ABS	Rated for use up to 95°C	HB	3mm	L 89.3mm x W 62.4mm x H 34mm

## KEY FEATURES

Raspberry Pi 4B clips in without screws | Vents for heat dissipation

